

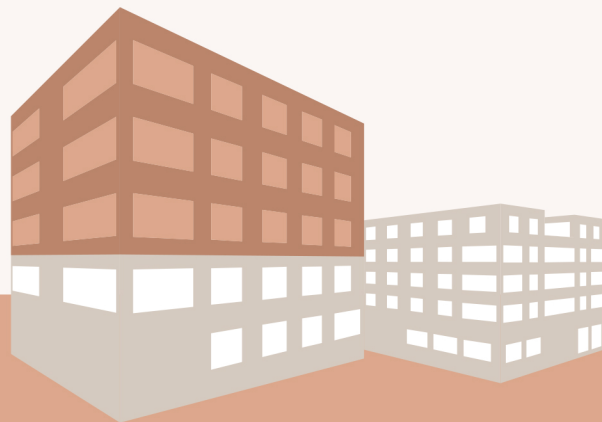
GRUNDRISSSE HAUS B

B-TYP 5.1 – 1. Obergeschoss

B-TYP 5.2 – 2. Obergeschoss

B-TYP 5.3 – 3. Obergeschoss

30



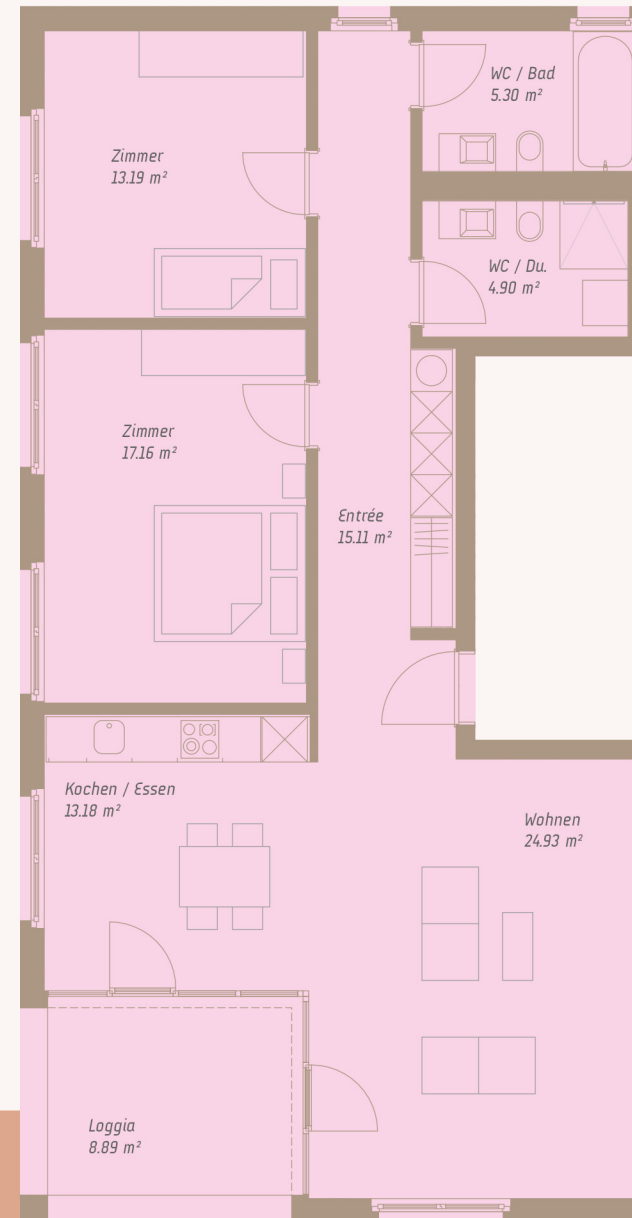
B-TYP 5

3.5-Zi.-Wohnung

Wohnfläche 94 m²

Loggia 9 m²

Lage: SW



M 1.00 2.00 5.00 10.00

